

# Long Tones Flute

## Concert F Descending

1



2



## Long Tone 1

1a



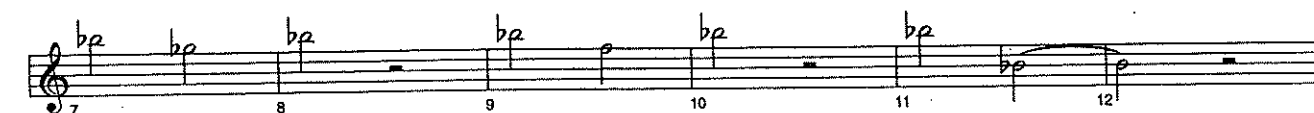
1b



1c



1d



# One Octave Scales & Arpeggios

In All Twelve Major Key Signatures

Flute

The image displays twelve musical staves, each representing a different major key signature. Each staff begins with a treble clef and a common time signature (C). The scales are written in a stepwise fashion, starting from the tonic and moving up and then down the octave. The arpeggios are written in a stepwise fashion, starting from the tonic and moving up and then down the octave. The key signatures are: Bb, F, C, G, D, A, E, B, and F#.

B $\flat$  F C G D A E B F#

*G $\flat$*

Musical staff for G $\flat$  major scale, starting with a treble clef and a key signature of two flats (B $\flat$  and E $\flat$ ). The scale is written in a single line, showing the ascending and descending chromatic patterns.

*D $\flat$*

Musical staff for D $\flat$  major scale, starting with a treble clef and a key signature of three flats (B $\flat$ , E $\flat$ , and A $\flat$ ). The scale is written in a single line, showing the ascending and descending chromatic patterns.

*A $\flat$*

Musical staff for A $\flat$  major scale, starting with a treble clef and a key signature of three flats (B $\flat$ , E $\flat$ , and A $\flat$ ). The scale is written in a single line, showing the ascending and descending chromatic patterns.

*E $\flat$*

Musical staff for E $\flat$  major scale, starting with a treble clef and a key signature of three flats (B $\flat$ , E $\flat$ , and A $\flat$ ). The scale is written in a single line, showing the ascending and descending chromatic patterns.

*Chromatic Exercises*

Musical staff for chromatic exercise 1-8, starting with a treble clef and a key signature of two flats (B $\flat$  and E $\flat$ ). The exercise consists of eight measures of chromatic movement, with fingerings 1 through 8 indicated below the notes.

Musical staff for chromatic exercise 9-17, starting with a treble clef and a key signature of two flats (B $\flat$  and E $\flat$ ). The exercise consists of nine measures of chromatic movement, with fingerings 9 through 17 indicated below the notes.

*B $\flat$  Chromatic Scale*

Musical staff for B $\flat$  chromatic scale, starting with a treble clef and a key signature of two flats (B $\flat$  and E $\flat$ ). The scale is written in a single line, showing the ascending and descending chromatic patterns, with fingerings 1, 2, 3, and 4 indicated below the notes.

*F Chromatic Scale*

Musical staff for F chromatic scale, starting with a treble clef and a key signature of one flat (B $\flat$ ). The scale is written in a single line, showing the ascending and descending chromatic patterns, with fingerings 1, 2, 3, and 4 indicated below the notes.

Musical staff for chromatic exercise 5-7, starting with a treble clef and a key signature of one flat (B $\flat$ ). The exercise consists of three measures of chromatic movement, with fingerings 5, 6, and 7 indicated below the notes.

FLUTE/PICCOLO

# UNIT 1

Practice Rhythms

1. 2. 3. 4.

Scale Rhythms

Scale Rhythms

# UNIT 2

Practice Rhythms

1. 2. 3. 4.

Scale Rhythms

Scale Rhythms

# UNIT 3

Practice Rhythms

1. 2. 3. 4.

## Scale Rhythms

Four musical staves in 4/4 time, each showing a scale with rhythmic notation. The scales are: 1. Ascending scale with quarter notes. 2. Descending scale with quarter notes. 3. Ascending scale with quarter notes and eighth notes. 4. Descending scale with quarter notes and eighth notes.

# UNIT 4

Practice Rhythms

1. 2. 3. 4.

## Scale Rhythms

Four musical staves in 3/4 time, each showing a scale with rhythmic notation. The scales are: 1. Ascending scale with quarter notes. 2. Descending scale with quarter notes. 3. Ascending scale with quarter notes and eighth notes. 4. Descending scale with quarter notes and eighth notes.

# UNIT 5

Practice Rhythms



A single musical staff in 4/4 time with a key signature of one flat (Bb). It contains four rhythmic patterns labeled 1 through 4. Pattern 1: quarter, quarter, quarter, quarter. Pattern 2: quarter, quarter, quarter, quarter. Pattern 3: quarter, quarter, quarter, quarter. Pattern 4: quarter, quarter, quarter, quarter.

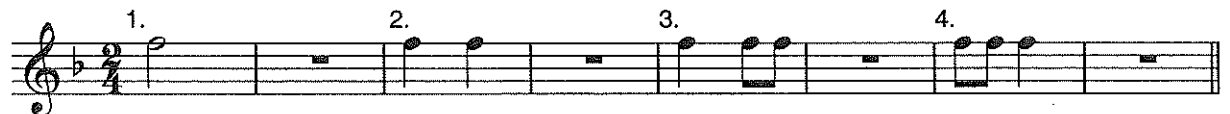
## Scale Rhythms



Four musical staves in 4/4 time with a key signature of one flat (Bb). Each staff contains a scale exercise. The first staff is an ascending scale: quarter, quarter, quarter, quarter, quarter, quarter, quarter, quarter, quarter, quarter, quarter, quarter, quarter, quarter, quarter, quarter. The second staff is a descending scale: quarter, quarter, quarter, quarter, quarter, quarter, quarter, quarter, quarter, quarter, quarter, quarter, quarter, quarter, quarter, quarter. The third staff is an ascending scale: quarter, quarter, quarter, quarter, quarter, quarter, quarter, quarter, quarter, quarter, quarter, quarter, quarter, quarter, quarter, quarter. The fourth staff is a descending scale: quarter, quarter, quarter, quarter, quarter, quarter, quarter, quarter, quarter, quarter, quarter, quarter, quarter, quarter, quarter, quarter.

# UNIT 6

Practice Rhythms



A single musical staff in 2/4 time with a key signature of one flat (Bb). It contains four rhythmic patterns labeled 1 through 4. Pattern 1: quarter, quarter. Pattern 2: quarter, quarter. Pattern 3: quarter, quarter. Pattern 4: quarter, quarter.

## Scale Rhythms



Four musical staves in 2/4 time with a key signature of one flat (Bb). Each staff contains a scale exercise. The first staff is an ascending scale: quarter, quarter, quarter, quarter, quarter, quarter, quarter, quarter, quarter, quarter, quarter, quarter, quarter, quarter, quarter, quarter. The second staff is a descending scale: quarter, quarter, quarter, quarter, quarter, quarter, quarter, quarter, quarter, quarter, quarter, quarter, quarter, quarter, quarter, quarter. The third staff is an ascending scale: quarter, quarter, quarter, quarter, quarter, quarter, quarter, quarter, quarter, quarter, quarter, quarter, quarter, quarter, quarter, quarter. The fourth staff is a descending scale: quarter, quarter, quarter, quarter, quarter, quarter, quarter, quarter, quarter, quarter, quarter, quarter, quarter, quarter, quarter, quarter.

# UNIT 7

Practice Rhythms



1. 2. 3. 4.

Four rhythmic patterns on a treble clef staff in 3/4 time, marked 1 through 4. Pattern 1: quarter, quarter, quarter, quarter, quarter, quarter, quarter, quarter. Pattern 2: quarter, quarter, quarter, quarter, quarter, quarter, quarter, quarter. Pattern 3: quarter, quarter, quarter, quarter, quarter, quarter, quarter, quarter. Pattern 4: quarter, quarter, quarter, quarter, quarter, quarter, quarter, quarter.

## Scale Rhythms



Four staves of scale rhythms in 3/4 time, starting on G4 and ending on G5. The first staff shows a quarter note followed by eighth notes. The second staff shows eighth notes. The third staff shows quarter notes. The fourth staff shows eighth notes.

# UNIT 8

Practice Rhythms



1. 2. 3. 4.

Four rhythmic patterns on a treble clef staff in 3/4 time, marked 1 through 4. Pattern 1: quarter, quarter, quarter, quarter, quarter, quarter, quarter, quarter. Pattern 2: quarter, quarter, quarter, quarter, quarter, quarter, quarter, quarter. Pattern 3: quarter, quarter, quarter, quarter, quarter, quarter, quarter, quarter. Pattern 4: quarter, quarter, quarter, quarter, quarter, quarter, quarter, quarter.

## Scale Rhythms



Four staves of scale rhythms in 3/4 time, starting on G4 and ending on G5. The first staff shows quarter notes. The second staff shows eighth notes. The third staff shows quarter notes. The fourth staff shows eighth notes.

Flute

UNIT 9

Practice Rhythms

1. 2. 3. 4.

Scale Rhythms

UNIT 10

Practice Rhythms

1. 2. 3. 4.

Scale Rhythms



# UNIT 11

**Practice Rhythms**

1. 2. 3. 4.

## Scale Rhythms

Four staves of musical notation in 2/4 time, each containing a different rhythmic pattern for scale runs. The patterns include eighth notes, quarter notes, and rests.

# UNIT 12

**Practice Rhythms**

1. 2. 3. 4.

## Scale Rhythms

Four staves of musical notation in 4/4 time, each containing a different rhythmic pattern for scale runs. The patterns include quarter notes, eighth notes, and rests.

# UNIT 13

**Practice Rhythms**

1. 2. 3. 4.

## Scale Rhythms

Scale Rhythms

# UNIT 14

**Practice Rhythms**

1. 2. 3. 4.

## Scale Rhythms

Scale Rhythms

# UNIT 15

**Practice Rhythms**



1. 2. 3. 4.

Four rhythmic exercises on a single staff in 2/4 time. Exercise 1: quarter notes G4, A4, B4, C5, B4, A4, G4. Exercise 2: quarter notes G4, A4, B4, C5, B4, A4, G4. Exercise 3: quarter notes G4, A4, B4, C5, B4, A4, G4. Exercise 4: quarter notes G4, A4, B4, C5, B4, A4, G4.

## Scale Rhythms



Four staves of rhythmic exercises in 2/4 time, all in the key of B-flat major. The exercises involve various rhythmic patterns such as eighth notes, quarter notes, and half notes, often with ties and slurs.

# UNIT 16

**Practice Rhythms**



1. 2. 3. 4.

Four rhythmic exercises on a single staff in 3/4 time. Exercise 1: quarter notes G4, A4, B4, C5, B4, A4, G4. Exercise 2: quarter notes G4, A4, B4, C5, B4, A4, G4. Exercise 3: quarter notes G4, A4, B4, C5, B4, A4, G4. Exercise 4: quarter notes G4, A4, B4, C5, B4, A4, G4.

## Scale Rhythms



Four staves of rhythmic exercises in 3/4 time, all in the key of B-flat major. The exercises involve various rhythmic patterns such as eighth notes, quarter notes, and half notes, often with ties and slurs.

# UNIT 17

**Practice Rhythms**

1. 2. 3. 4.

**Scale Rhythms**

Scale Rhythms

# UNIT 18

**Practice Rhythms**

1. 2. 3. 4.

**Scale Rhythms**

Scale Rhythms



# UNIT 21

Practice Rhythms

1. 2. 3. 4.

## Scale Rhythms

# UNIT 22

Practice Rhythms

1. 2. 3. 4.

## Scale Rhythms

# UNIT 23

Practice Rhythms

Musical notation for Practice Rhythms in Unit 23, 2/4 time signature. The notation consists of a single staff with four numbered rhythmic exercises:

1. Quarter notes: G4, A4, B4, C5, D5, E5, F5, G5.
2. Quarter notes: G4, A4, B4, C5, D5, E5, F5, G5.
3. Quarter notes: G4, A4, B4, C5, D5, E5, F5, G5.
4. Quarter notes: G4, A4, B4, C5, D5, E5, F5, G5.

Scale Rhythms

Musical notation for Scale Rhythms in Unit 23, 2/4 time signature. The notation consists of four staves showing rhythmic patterns for a scale in B-flat major (G4, A4, B4, C5, D5, E5, F5, G5):

- Staff 1: Quarter notes: G4, A4, B4, C5, D5, E5, F5, G5.
- Staff 2: Quarter notes: G4, A4, B4, C5, D5, E5, F5, G5.
- Staff 3: Quarter notes: G4, A4, B4, C5, D5, E5, F5, G5.
- Staff 4: Quarter notes: G4, A4, B4, C5, D5, E5, F5, G5.

# UNIT 24

Practice Rhythms

Musical notation for Practice Rhythms in Unit 24, 6/8 time signature. The notation consists of a single staff with four numbered rhythmic exercises:

1. Quarter notes: G4, A4, B4, C5, D5, E5, F5, G5.
2. Quarter notes: G4, A4, B4, C5, D5, E5, F5, G5.
3. Quarter notes: G4, A4, B4, C5, D5, E5, F5, G5.
4. Quarter notes: G4, A4, B4, C5, D5, E5, F5, G5.

Scale Rhythms

Musical notation for Scale Rhythms in Unit 24, 6/8 time signature. The notation consists of four staves showing rhythmic patterns for a scale in B-flat major (G4, A4, B4, C5, D5, E5, F5, G5):

- Staff 1: Quarter notes: G4, A4, B4, C5, D5, E5, F5, G5.
- Staff 2: Quarter notes: G4, A4, B4, C5, D5, E5, F5, G5.
- Staff 3: Quarter notes: G4, A4, B4, C5, D5, E5, F5, G5.
- Staff 4: Quarter notes: G4, A4, B4, C5, D5, E5, F5, G5.

# UNIT 25

**Practice Rhythms**



## Scale Rhythms



# UNIT 26

**Practice Rhythms**



## Scale Rhythms





# UNIT 27

**Practice Rhythms**



1. 2. 3. 4.

This section contains four rhythmic exercises on a single staff in 6/8 time. Exercise 1 consists of a dotted quarter note followed by an eighth note. Exercise 2 consists of a quarter note followed by an eighth note. Exercise 3 consists of a quarter note followed by a dotted quarter note. Exercise 4 consists of a quarter note followed by an eighth note.

## Scale Rhythms



This section contains four staves of scale rhythms in 6/8 time, each starting with a dotted quarter note followed by an eighth note. The first staff shows a descending scale. The second staff shows an ascending scale. The third staff shows a descending scale. The fourth staff shows an ascending scale.

# UNIT 28

**Practice Rhythms**



1. 2. 3. 4.

This section contains four rhythmic exercises on a single staff in 2/4 time. Exercise 1 consists of a quarter note followed by an eighth note. Exercise 2 consists of a quarter note followed by an eighth note. Exercise 3 consists of a quarter note followed by a dotted quarter note. Exercise 4 consists of a quarter note followed by an eighth note.

## Scale Rhythms



This section contains four staves of scale rhythms in 2/4 time, each starting with a quarter note followed by an eighth note. The first staff shows a descending scale. The second staff shows an ascending scale. The third staff shows a descending scale. The fourth staff shows an ascending scale.

# UNIT 29

**Practice Rhythms**

1. 2. 3. 4.

## Scale Rhythms

Scale Rhythms

# UNIT 30

**Practice Rhythms**

1. 2. 3. 4.

## Scale Rhythms

Scale Rhythms

# UNIT 31

**Practice Rhythms**



1. 2. 3. 4.

Four rhythmic patterns on a single staff in 3/4 time, marked 1 through 4. Pattern 1: quarter, eighth, eighth, quarter. Pattern 2: quarter, eighth, eighth, quarter. Pattern 3: quarter, eighth, eighth, quarter. Pattern 4: quarter, eighth, eighth, quarter.

## Scale Rhythms



Four staves of scale rhythms in 3/4 time, each starting with a C major scale. The first staff shows a quarter note followed by eighth notes. The second staff shows quarter notes. The third staff shows eighth notes. The fourth staff shows quarter notes.

# UNIT 32

**Practice Rhythms**



1. 2. 3. 4.

Four rhythmic patterns on a single staff in 3/4 time, marked 1 through 4. Pattern 1: quarter, eighth, eighth, quarter. Pattern 2: quarter, eighth, eighth, quarter. Pattern 3: quarter, eighth, eighth, quarter. Pattern 4: quarter, eighth, eighth, quarter.

## Scale Rhythms



Four staves of scale rhythms in 3/4 time, each starting with a C major scale. The first staff shows a quarter note followed by eighth notes. The second staff shows quarter notes. The third staff shows eighth notes. The fourth staff shows quarter notes.

# UNIT 33

**Practice Rhythms**

1. 2. 3. 4.

## Scale Rhythms

Scale Rhythms

# UNIT 34

**Practice Rhythms**

1. 2. 3. 4.

## Scale Rhythms

Scale Rhythms

# UNIT 35

Practice Rhythms  $\text{♩} = 92$

1. 2. 3. 4.

## Scale Rhythms

Four staves of musical notation for Scale Rhythms in Unit 35, showing various rhythmic exercises in a two-flat key signature and 2/4 time signature.

# UNIT 36

Practice Rhythms  $\text{♩} = 72$

1. 2. 3. 4.

## Scale Rhythms

Four staves of musical notation for Scale Rhythms in Unit 36, showing various rhythmic exercises in a one-sharp key signature and 2/4 time signature.